



GOST - R

SPECIAL FEATURES

- LOW COST VERSION
- SELECTABLE RANGES FROM
-6000 to 0 & 0 to 6000 mmWC, -1 to 0 & 0 to 25 kg/cm²
- STANDARD FOLLOWED IN GENERAL EN 837 - 3

APPLICATIONS

SUITABLE FOR CLEAN AIR, CORROSIVE ENVIRONMENTS & GASEOUS OR NON CRYSTALLIZED LIQUID MEDIA THAT WILL NOT OBSTRUCT THE PRESSURE SYSTEM.

SPECIFICATIONS

STANDARD VERSION : 100 mm & 150 mm

Diaphragm Type	:	HP : -1 to 0 kg/cm ² & 0 to 25 kg/cm ²
	:	LP : -6000 mmWC to 0 & 0 to 6000 mmWC
Accuracy	:	±2.5% of F. S.
Ambient temperature	:	- 25°C to + 65°C
Process temperature	:	Max 100°C
Operating pressure range	:	75 % of Scale Value
Over pressure limit	:	130 % of Scale Value

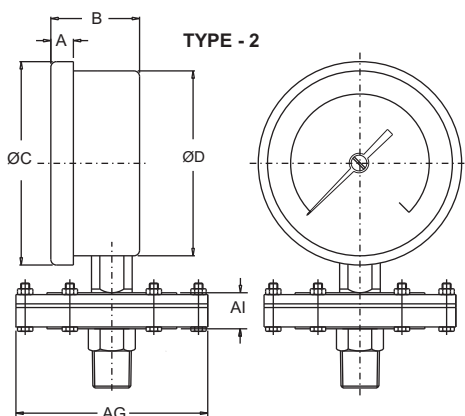
Case & Bezel	:	Steel (Painted, Push Fit Type)
Top Chamber	:	Steel (Painted)
Bottom Chamber	:	AISI 316 SS
Gauge Connection	:	½"BSP(M)
Movement	:	Copper Alloy
Diaphragm	:	Spring Steel with PTFE Protection for HP ranges & AISI 316L SS for LP ranges

Note: AISI 316L SS Diaphragm for HP ranges is available on request.

Dial	:	Aluminum, black graduation on white background
Pointer	:	Aluminum, black Coloured, Slotted Zero adjustable
Window	:	Sheet Glass
Gasket	:	Neoprene

Temperature effect:

The variation of indication caused by effects of temperature is to be calculated by below formula; which is to be added in the specified accuracy while measurement :- Formula : $\pm 0.08 \times (t_2 - t_1) \% \text{ of F. S.}$
where t1 = reference temperature (+20°C) and t2 = ambient temperature in °C.



NS	A	B	ØC	ØD	AG	AI	Weight in gram (With Box)	Type
100	13	46.5	98.5	97	158	17.5	2520.00	LP
150	15	48	155.5	154	158	17.5	2960.00	LP
100	13	46.5	98.5	97	98	19	1350.00	HP
150	15	48	155.5	154	98	19	1850.00	HP

LP Type = -6000 mmWC to 0 & 0 to 6000 mmWC
HP Type = -1 kg/cm² to 0 & 0 to 25 kg/cm²

RANGE TABLE

Note : Waaree offers National / International Scales like mbar, mmWC, inHg with psi, mWC, inWC & Dual Scale or Equivalent scales as per the requirement can be provided on request.
Following are the example tables for mmWC & kg/cm² Scale.

PRESSURE, VACUUM & COMPOUND RANGES (HP)

PRESSURE RANGE

SINGLE SCALE - kg/cm ²									
0/0.6	0/1.6	0/4	0/10	kg/cm ²	psi	kg/cm ²	psi	kg/cm ²	psi
0/1	0/2.5	0/6	0/16	0/1	0/15	0/4	0/60	0/10	0/150
				0/2	0/30	0/7	0/100	0/16	0/220

VACUUM & COMPOUND RANGE

SINGLE SCALE - kg/cm ²					
-1/0.6	-1/3	-1/9			
-1/1.5	-1/5	-1/15			
DUAL SCALE - kg/cm ² with psi					
inHg with psi	mmHg with kg/cm ²	inHg with psi	mmHg with kg/cm ²	inHg with psi	mmHg with kg/cm ²
-30/0	-760/0	-30/60	-760/4	-30/200	-760/14
-30/15	-760/1	-30/100	-760/7		
-30/30	-760/2	-30/150	-760/10		

PRESSURE, VACUUM & COMPOUND RANGES (LP)

PRESSURE RANGE

SINGLE SCALE - mmWC (LP)		
0/250	0/1000	0/2500
0/400	0/1600	0/4000
0/600	0/2000	0/6000

VACUUM & COMPOUND RANGE

SINGLE SCALE - mmWC (VACUUM)		
- 250/0	- 1000/0	- 2500/0
- 400/0	- 1600/0	- 4000/0
- 600/0	- 2000/0	- 6000/0
SINGLE SCALE - mmWC (COMPOUND)		
- 100/150	- 400/600	- 1000/1500
- 150/250	- 600/1000	- 1500/2500
- 200/400	- 800/1200	- 2000/4000

HOW TO ORDER

Example

BASIC MODEL

CODE	F	H	AM
NOMINAL SIZE	100 mm	150 mm	X
TYPE OF MOUNTING			X
2 DIRECT BOTTOM ENTRY			XX
TOP CHAMBER			XX
CU Steel Painted (Standard)			XX
DIAPHRAGM (Note: AISI 316L SS Diaphragm for HP ranges is available on request)			XX
CV SPRING STEEL with PTFE protection (Standard) - for HP ranges	UJ	AISI 316L SS (Standard) - for LP ranges	XX
BOTTOM CHAMBER			XX
TM AISI 316 SS (Standard)			XXX
GAUGE CONNECTION			0/250 mmWC
4BM ½"BSP (M) (Standard)	4NM ½"NPT (M)		XX
RANGE			
REFER RANGE TABLE			
OPTIONAL EXTRAS			
PW FIVE POINT CALIBRATION CERTIFICATE	RH CUSTOM DESIGNED DIAL		
SW DIAL TAG MARKING	GH MATERIAL TEST CERTIFICATES#		
SX SS TAG PLATE			

#MATERIAL TEST CERTIFICATES WILL BE PROVIDED FOR WETTED PARTS ONLY WITH CHEMICAL COMPOSITION TESTING.
FOR OTHERS, PLEASE CONSULT FACTORY.

Ordering Example: AM - X - X - XX - XX - XX - XXX - 0/250 mmWC - XX

FOR OTHER OPTIONAL ITEMS, PLEASE CONTACT FACTORY FOR DELIVERY AND MINIMUM QUANTITY OF ORDER.

Note : Specifications and dimensions given in this product catalogue represents the state of engineering at the time of printing.
Modifications may take place and materials specified may be replaced by others without prior notice.